

## Using Pneumotrac with Spirotrac:

For the use of Pneumotrac with Spirotrac Spirometry software please refer to the Spirotrac Quick Start Guide.

### Ordering Info:

- 28350** 2820 BVF Bacterial/Viral Filters (50)
- 20303** 2030 Noseclip disposable (200)
- 20242** 2024 SafeTway mouthpieces (200)
- 70201** 7000 Spirotrac V Network Licence
- 42084** Flow Conditioning Meshes (10)
- 76050** Filter Pads & Tweezers (50)

Technical Support: +44 1280 827177

[www.vitalograph.co.uk](http://www.vitalograph.co.uk)

©Vitalograph®, Spirotrac®, SafeTway®, BVF™ are Pneumotrac™ are trademarks of Vitalograph

PRINTREF:05284\_6



# Vitalograph

Your respiratory partner



the difference is clear

## Vitalograph Pneumotrac Quick Start Guide

## How to install Pneumotrac

### Please ensure Spirotrac is already installed

(see Spirotrac Quick Start Guide)

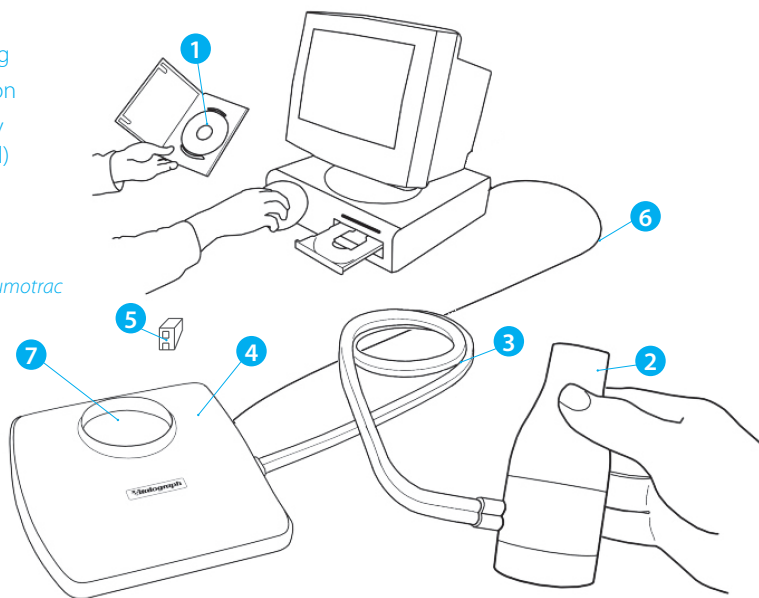
#### System Components:

1. Spirotrac CD (with USB drivers)

*Please ensure Spirotrac® is ready to use (see Spirotrac Quick start Guide) and that Pneumotrac™ is selected within Spirotrac under Tools / Device*

2. Flowhead
3. Silicone tubing
4. Hygiene station
5. PP3 9V Battery  
\*(not supplied)
6. USB cable
7. Filter pad\*

\* Not required if Pneumotrac is used with BVF.



#### Installation - Setting up the Pneumotrac hardware:

1. Connect the silicone tubing to the side of the hygiene station and the flowhead. Ensure that the ribbed side of the tubing matches with the ribbed side of the connectors at both ends.
2. Connect the USB cable into an available USB socket on your PC.
3. Plug the other end of the USB connector into the socket at the side of the hygiene station.
4. Insert a 9V PP3 battery into the receptacle at the bottom of the hygiene station. (This drives the hygiene fan, although the device will function without a battery.)
5. Place a new filter pad on the hygiene station. Replace the pad daily. Only place the flowhead in its receptacle. (Optional, not required if a BVF is used for testing).

#### USB Drivers - Setting up the system for use:

1. The PC will detect the USB Pneumotrac automatically.
2. With the Spirotrac CD-ROM in the drive, allow the drivers to automatically install. There are two drivers, both need to be installed.
3. In the Spirotrac application, select **Tools/Device** and ensure that Pneumotrac is selected as the device.
4. Select **Tools/Options/Communications** and test the COM port.

#### Accuracy Check:

1. Click on the **Syringe** icon.
2. Check the accuracy using a 3-L Precision Syringe.



3-L Precision Syringe