



Be free to help your patients perform spirometry

Vitalograph®

V-CORE FLOWHEAD TECHNOLOGY



V-CORE

V-Core Flowhead Technology powers an innovative range of accurate and reliable spirometers.

Each device is designed to respond to a specific set of needs, across a variety of healthcare environments. The result of over 60 years of respiratory diagnostic experience and engineering expertise.



Have confidence in a true picture of respiratory function.

Providing accuracy and reliability for you and your patients.



Accurate

A Fleisch pneumotachograph provides accurate, linear, and stable measuring, even at very low flows. Reliable, and consistent results every time.



Repeatable

Multiple pressure measuring points sample flow data for more repeatable results. Beneficial when monitoring respiratory health over time.



Robust

With a core of stainless steel air capillaries and no moving parts, this is a highly durable flowhead. Ideal for frequent testing and portability.



Safe

Single-use Bacterial Viral Filters provide an uncompromising layer of hygiene to the flowhead without any lessening of device accuracy.



Comfortable

The ergonomically designed protective casing provides a secure and comfortable grip, with a contemporary look and feel.

Accurate respiratory evaluation

32+

Pressure measuring points

Twin annular rings of multiple pressure measuring points around the Fleisch pneumotachograph are ported out to a low-range differential pressure transducer. This enables sampling of the flow data thereby generating a more repeatable and accurate test result.

1000 HZ

Differential pressure sampling

Pressure is sampled at a frequency of 1000Hz and 14 bits allowing the instantaneous and accurate calculation of flow rates and, by differentiation over time, the accumulated volume.



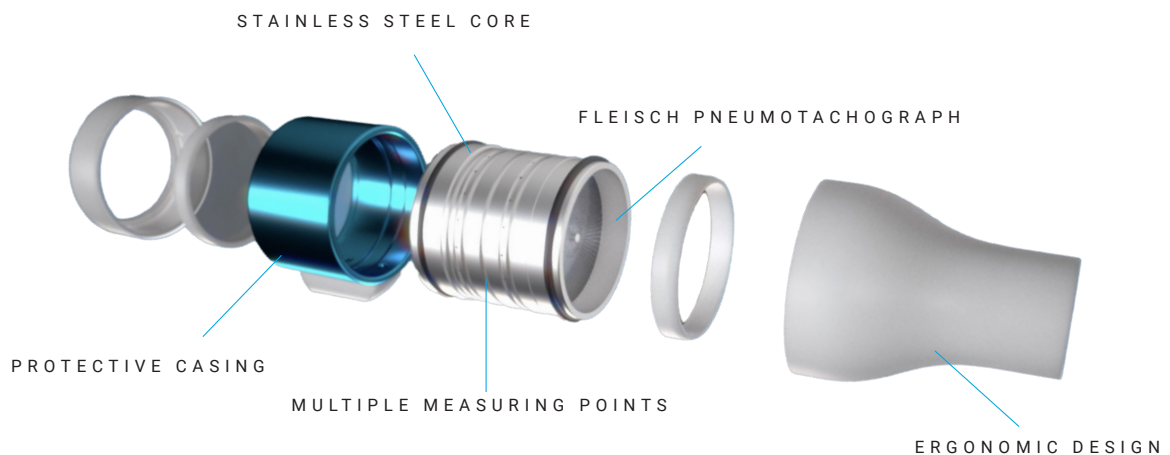
Low impedance

Enabling accurate measurement across the full range of flow rates.



Increased air flow

The Fleisch pneumotachograph consists of a bundle of small stainless steel capillary tubes giving accurate, linear and stable results.





Accurate results

Meeting the ATS/ERS 2019 Guidelines for inspiration and expiration.

2.5%

+/- Volume accuracy

10%

+/- Flow accuracy



V-CORE RANGE

Diagnostic Spirometers Featuring V-Core Flowhead Technology

Wherever and whenever you need spirometry, we have a solution that enables you to be free to help your patients perform their best test.



Handheld Spirometers

Standalone spirometry in the palm of your hand. Perfect for routine testing on the go.



micro Spirometer

Fast and simple diagnostic spirometry in a compact package.

Our smallest V-Core enabled respiratory diagnostics solution, the micro™ offers simple and fast diagnostic spirometry in a lightweight, handheld device for accurate testing on the move.

[Learn more about the micro Spirometer](#)



In2itive Spirometer

High-performance spirometry for accurate testing on the move.

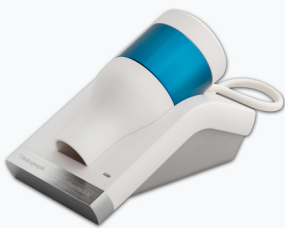
The In2itive™ is a versatile spirometry solution that offers a range of detailed testing options and direct EMR integration.

[Learn more about the In2itive Spirometer](#)



PC-Based Spirometers

Complete and robust spirometry solutions that interact directly with your laptop or PC.

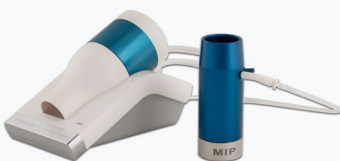


Pneumotrac Spirometer

Comprehensive and portable desktop spirometry to integrate with your PC, laptop, or tablet.

The Pneumotrac™ combined with Spirotrac® software is a powerful, flexible, and robust respiratory diagnostic device.

[Learn more about the Pneumotrac](#)



Pneumotrac with RMS

Perform multiple respiratory function tests in the same session, wherever they are needed.

An enhanced diagnostics solution that combines highly accurate respiratory muscle strength and spirometry testing in one robust, portable device.

[Learn more about the Pneumotrac with RMS](#)



Desktop Spirometers

Ideal for office or bedside testing, featuring integrated printers and additional testing options.



Alpha Spirometer

The next generation in our range of diagnostic desktop spirometers.

Designed for testing on the go, remotely or in a clinic, the Alpha™ is our ultimate desktop spirometry solution. Features a 7" high-resolution touch-screen and a redesigned intuitive user friendly interface.

[Learn more about the Alpha Spirometer](#)



Compact Medical Workstation

Enabling an inter-disciplinary approach to evaluation and management of respiratory conditions.

The Compact™ is a highly accurate transportable multi-diagnostic clinic solution that includes spirometry, RMS, and ECG as well as direct connectivity to EMR for efficient workflow management of respiratory diagnostics.

[Learn more about the COMPACT Medical Workstation](#)



**Connect with an expert who
understands your field.**

vitalograph.com/contact-us